

## Product Data Sheet

### 1. Flanged fittings

1.04 flanged pipes

### Flanged spigot pipe (FS) PN10/16

**Material** EN 1563 EN-GJS-400-15

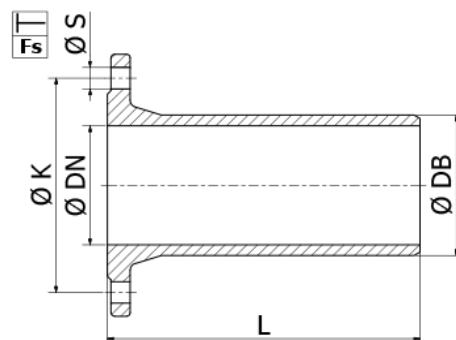
**Design Std.** EN 545

**Coating** Epoxy GSK RAL-GZ 662

**Approval** Kiwa BRL-K772/04



Kolk flanged fittings are made of ductile iron GJS-400/500 (DIN1693 GGG-40/50). Designed acc. to EN 545, flange drilling acc. to EN 1092-2 (ISO 7005-2). Epoxy coated (Resicoat®) acc. to EN 14901 (DIN 30677-2) and GSK certified (RAL-GZ 662). The table contains only the standard lengths. Non standard lengths are possible.



### Flanged spigot pipe (FS) PN10/16

Article	Article Nr.	PN	ø DN [mm]	ø DB [mm]	L [mm]	Holes # [DN]	ø K [mm]	ø S [mm]	G [kg]					
FS 50	1.04FS1.000010	PN10/16	50	66	400	4	125	19	6					
FS 65	1.04FS1.000020	PN10/16	65	86	400	4	145	19	9					
FS 80	1.04FS1.000030	PN10/16	80	98	350	8	160	19	8					
FS 100	1.04FS1.010010	PN10/16	100	118	360	8	180	19	10					
FS 125	1.04FS1.010020	PN10/16	125	144	370	8	210	19	12					
FS 150	1.04FS1.010030	PN10/16	150	170	380	8	240	23	16					
FS 200	1.04FS2.020010	PN10	200	222	400	8	295	23	23					
FS 250	1.04FS2.020020	PN10	250	274	420	12	350	23	38					
FS 300	1.04FS2.030010	PN10	300	326	440	12	400	23	46					
FS 350	1.04FS2.030020	PN10	350	378	460	16	460	23	53					
FS 400	1.04FS2.040010	PN10	400	429	480	16	515	28	68					
FS 450	1.04FS2.040020	PN10	450	477	520	20	565	28	85					
FS 500	1.04FS2.050010	PN10	500	532	560	20	620	28	114					
FS 600	1.04FS2.060010	PN10	600	635	600	20	725	31	173					
FS 700	1.04FS2.070010	PN10	700	738	600	24	840	31	183					
FS 800	1.04FS2.080010	PN10	800	842	600	24	950	34	230					
FS 900	1.04FS2.090010	PN10	900	945	600	28	1050	34	277					
FS 1000	1.04FS2.100010	PN10	1000	1048	600	28	1160	37	334					
FS 1200	1.04FS2.120010	PN10	1200	1255	600	32	1380	41	472					
FS 200	1.04FS3.020010	PN16	200	222	400	12	295	23	25					
FS 250	1.04FS3.020020	PN16	250	274	420	12	355	28	42					

### Flanged spigot pipe (FS) PN10/16

Article	Article Nr.	PN	ø DN [mm]	ø DB [mm]	L [mm]	Holes # [DN]	ø K [mm]	ø S [mm]	G [kg]					
FS 300	1.04FS3.030010	PN16	300	326	440	12	410	28	51					
FS 350	1.04FS3.030020	PN16	350	378	460	16	470	28	58					
FS 400	1.04FS3.040010	PN16	400	429	480	16	525	31	75					
FS 450	1.04FS3.040020	PN16	450	477	520	20	585	31	94					
FS 500	1.04FS3.050010	PN16	500	532	560	20	650	34	125					
FS 600	1.04FS3.060010	PN16	600	635	600	20	770	37	190					
FS 700	1.04FS3.070010	PN16	700	738	600	24	840	37	201					
FS 800	1.04FS3.080010	PN16	800	842	600	24	950	41	253					
FS 900	1.04FS3.090010	PN16	900	945	600	28	1050	41	305					
FS 1000	1.04FS3.100010	PN16	1000	1048	600	28	1170	44	367					
FS 1200	1.04FS3.120010	PN16	1200	1255	600	32	1390	50	519					

 **TRAN-SIG-MA**

Tran-Sig-Ma spol. s r.o.  
 Dukelských hrdinů 19  
 170 00 Praha 7 Czech  
 Republic

Tel: 00420 233 373 040,  
 00420 233 370 903,  
 00420 233 380 185  
 E-mail: [info@tran-sig-ma.cz](mailto:info@tran-sig-ma.cz)  
<http://www.tran-sig-ma.cz>